

***Discovering high-grade vein systems in
premier mining districts***

Corporate Presentation

June 2025

TSXV:EQTY / OTCQB:EQMEF / FSE-EGSD

Forward-Looking Statement

- Some of the statements contained in this presentation may be deemed “forward-looking statements.” These include estimates and statements that describe the Company’s future plans, objectives or goals, and expectations of a stated condition or occurrence.
- Forward-looking statements may be identified by the use of words such as “believes”, “anticipates”, “expects”, “estimates”, “may”, “could”, “would”, “will”, or “plan”. Since forward-looking statements are based on assumptions and address future events and conditions, by their very nature they involve inherent risks and uncertainties.
- Actual results relating to, among other things, results of exploration, reclamation, capital costs, and the Company’s financial condition and prospects, could differ materially from those currently anticipated in such statements for many reasons such as but not limited to; changes in general economic conditions and conditions in the financial markets; changes in demand and prices for the minerals the Company expects to produce; litigation, legislative, environmental and other judicial, regulatory, political and competitive developments; technological and operational difficulties encountered in connection with the Company’s activities; and changing foreign exchange rates and other matters discussed in this presentation.
- Persons should not place undue reliance on the Company’s forward-looking statements. Further information regarding these and other factors, which may cause results to differ materially from those projected in forward-looking statements, are included in the filings by the Company with securities regulatory authorities. The Company does not assume any obligation to update or revise any forward-looking statement that may be made from time to time by the Company or on its behalf, except in accordance with applicable securities laws, whether as a result of new information, future events or otherwise.
- The TSX Venture Exchange has not reviewed and does not accept responsibility for the adequacy or accuracy of the contents of this presentation, that has been prepared by management.
- Robert Macdonald, MSc., PGeo. is the VP of Exploration for Equity Metals Corporation and is the Qualified Person responsible for the supervision and preparation of the technical information in this disclosure.

Investment Highlights

*High-grade resource open
for expansion at Silver
Queen Project in B.C.
No Royalty burden*



*Exceptional assay results
demonstrate exploration
upside across several veins
New Drilling in 2025*



*Mineral Resource Increases
Ind: +187% AgEq
Inf: +30% AgEq*



*Additional prospective gold,
copper, diamond, silica sand
and critical metals*



*The new Arlington Project,
BC adds potentially
significant gold-copper
asset; **drilling started***



*Experienced management
and geological team with a
proven track record*



Capital Markets Profile

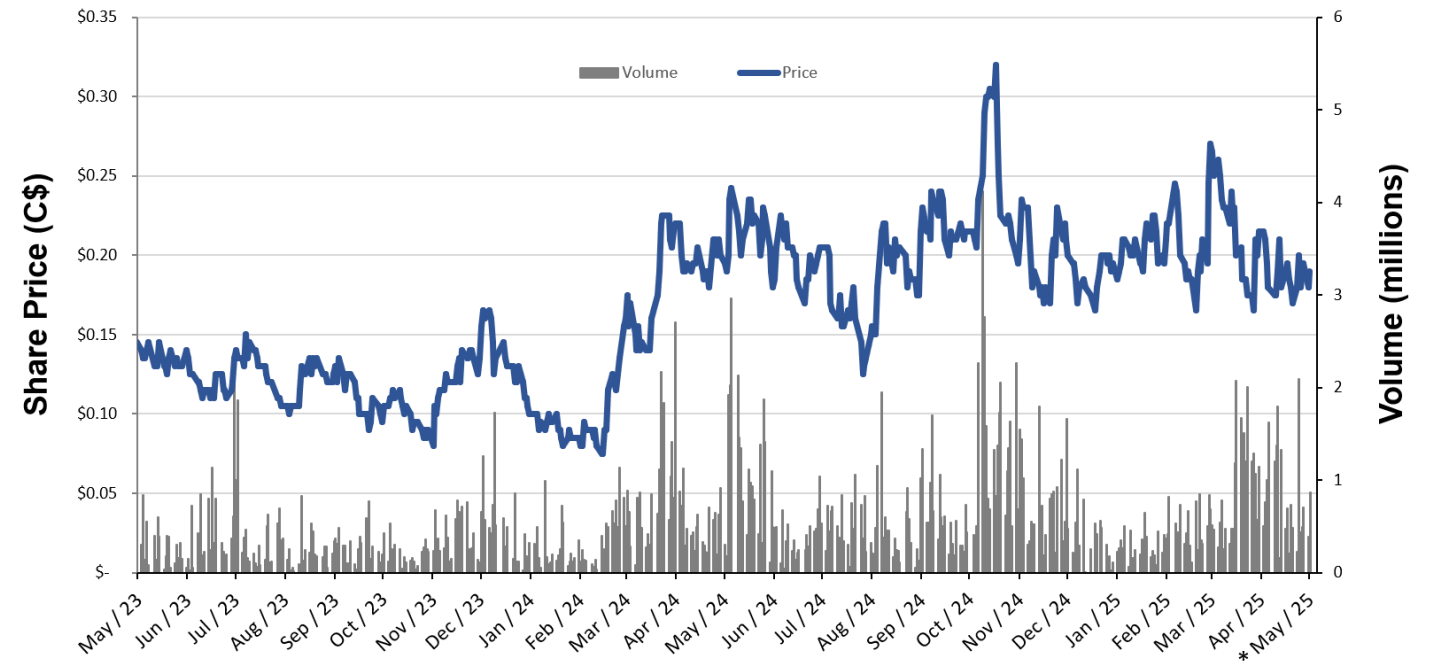
Capital Structure

Ticker	TSX-V: EQTY
Share Price (May 22, 2025)	C\$0.25
52-Week Trading Range	\$0.125 – C\$0.325
Basic Shares Outstanding	194.8M
Options	13.3M ¹
Warrants	43.6M ²
FD Shares Outstanding	251.7M
Market Capitalization (basic)	C\$46.8M
Cash	C\$5.0M
Enterprise Value	C\$47.2M
EV/Oz AgEq	C\$0.44
Debt	Nil

1. 14,025,000 options outstanding with a weighted average exercise price of C\$0.18 and a weighted average life of 2.9 years
2. 39,246,940 warrants outstanding with a weighted average exercise price of C\$0.17 and a weighted average life of 1.4 years

Share Price and Volume (Since Jan 2023)

Equity Metals Corporation



* Last update: May 13, 2025
Source: stockwatch.com

Management Team & Board

Experienced team with a proven track record of exploration, discovery and development success in North America

Lawrence Page, LLB, KC – Chairman & Director

- Director/officer of several public prominent exploration and mining companies
- Major Projects and Mines involvement: *Penasquito, Mexico; Hemlo and Eskay Creek, Canada*

Joseph A. Kizis Jr., MSc., P.Geo – President & Director

- President, Director, *Bravada Gold Corporation*
- 40 years experience in exploration for gold, silver, copper, molybdenum, lead and zinc in BC and abroad
- Major Projects involvement: Wind Mountain, NV; Buffalo Valley, NV; Mount Hope, NV; Homestake Ridge, BC

Killian Ruby, CPA, CA, B. Sc. (Acc) – CFO & Director

- President and CEO of Malaspina Consultants & Manex Resource Group
- Assurance Partner at Wolrige Mahon LLP
- Served as Senior Manager of *KPMG LLP*

Robert W.J. Macdonald, MSc., P.Geo. – VP Exploration

- VP Geological Services, Manex Resource Group
- Major Projects involvement: *Cerro Las Minitas, Mx; Homestake Ridge, BC*

Courtney Shearer, B.Sc (Eng.), MBA, CPA, CMA – Director

- Served as Director and Consultant, San Gold Corporation

John Kerr, BASC., P.Eng. – Director

- 50 years experience in discovery and development of significant mineral deposits in North America
- Major Projects involvement: Santa Fe, NV; Calvada, NV; Mindora, NV; Ming Mine, NL; Rambler East, NL; Frasergold Deposit, BC

Arie Page, LLB – Corporate Secretary

- Corporate Secretary for several public resource companies including Southern Silver Exploration Corp.

Equity Metals' Portfolio of Assets

Monument & WO Projects (NW Territories)

- Diamond-bearing kimberlites
- Nearby diamond production, ~40 km from both the Diavik and Ekati diamond mines

Silver Queen Project (British Columbia)

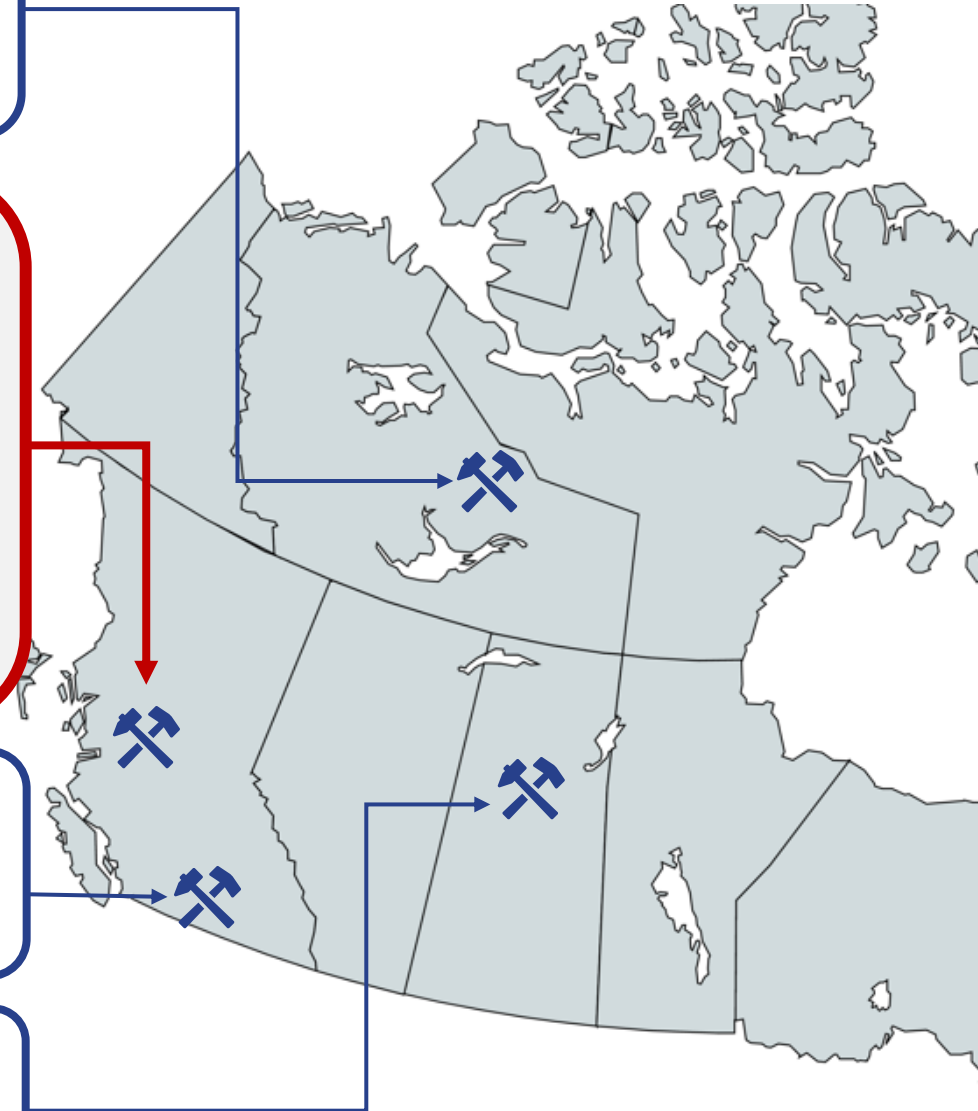
- Flagship, precious/base metal project near multiple producing/past-producing mines
- No underlying Royalties on the Property
- High-grade Mineral Resource (2022)¹
 - 62.8 Moz AgEq grading 565 g/t AgEq (indicated)
 - 22.5 Moz AgEq grading 365 g/t AgEq (inferred)
- 6,000m drilling planned to commence June 2025

Arlington Project (British Columbia)

- Greenfields Au-Cu-Ag Project in Beaverdell District
- Multiple exploration targets with high grade assay results
- 3,000m drilling planned to commence May 2025

La Ronge Silica Project (Saskatchewan)

- Unconsolidated, high-purity silica sand, potential feed to convert to silicon for the battery industry



1. Parameters for the NI 43-101 Compliant Mineral Resource Estimate are described on Slide 10 and in the EQTY News Release, dated Dec 1, 2022

Silver Queen Project

Project Highlights

Well-positioned, district-scale property in the Skeena Arch porphyry copper region

- Intermediate-sulfidation epithermal veins – immediate focus
- Copper Porphyry targets – possible longer-term evaluation

Existing infrastructure in a mature mining region in B.C.

Minor historic production since 1912, ~9km of underground development

High-grade NI 43-101 resource (2022)

Positive metallurgy in 1988 and 2022

- Pilot plant recoveries of up to 83% Au, 95% Ag, 93% Cu, 91% Pb and 98% Zn
- Additional metallurgical work underway

Ongoing drilling demonstrates expansion

- 52,877m (146 holes) completed by Equity Metals since late 2020

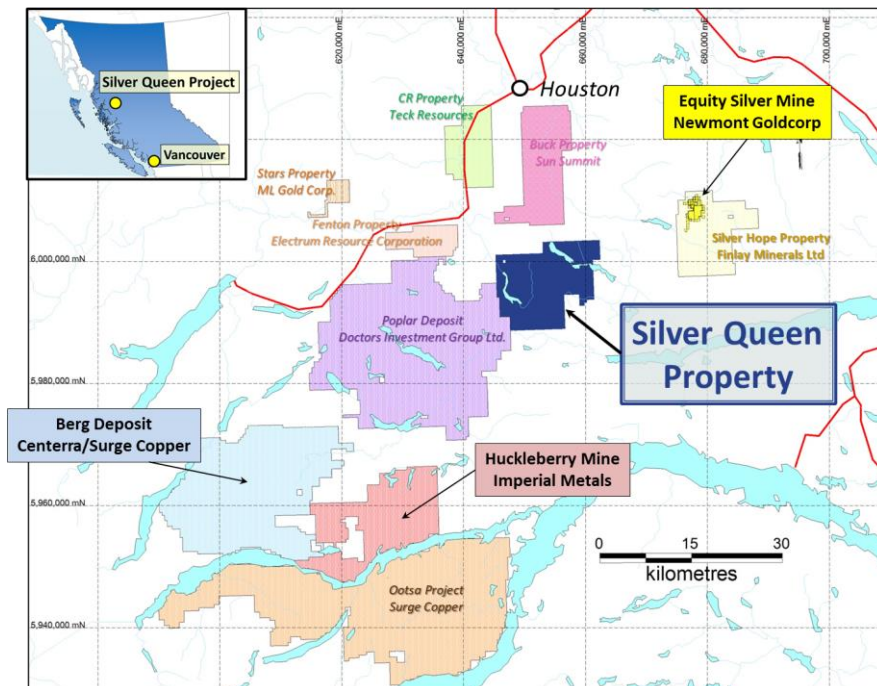


Silver Queen Project

Superior Location & Infrastructure

Near major deposits/mines including Berg, Equity Silver, Endako, Huckleberry, and Mt. Milligan

- 17 crown-granted titles and 46 tenure claims covering 18,871 ha in the Omineca Mining Division
 - 35 km south of the town of Houston, B.C., and 590 km north northwest of Vancouver, B.C.
 - Proximity to existing infrastructure including power, roads and rail
- Near four prominent producers (Teck Resources, Imperial Metals, Centerra Gold and Newmont Goldcorp)



Silver Queen Project

Exploration Highlights

Since late 2020, completed 146 holes (52,877m) – 42 New Holes Completed in 2024

Camp Deposit – Silver bias

- Bonanza-grade silver, up to 56,115g/t Ag in drill core
- **New Mineral Resources**
- Open at depth

2020 drilling – High-grade vein with “Ruby Silver”

Sveinson Deposit – Gold bias

- Au-Ag-polymetallic veins
- Drilled along 1000m strike to 350m depth
- **New Mineral Resources**
- Open at depth

No. 3 Deposit – Gold bias

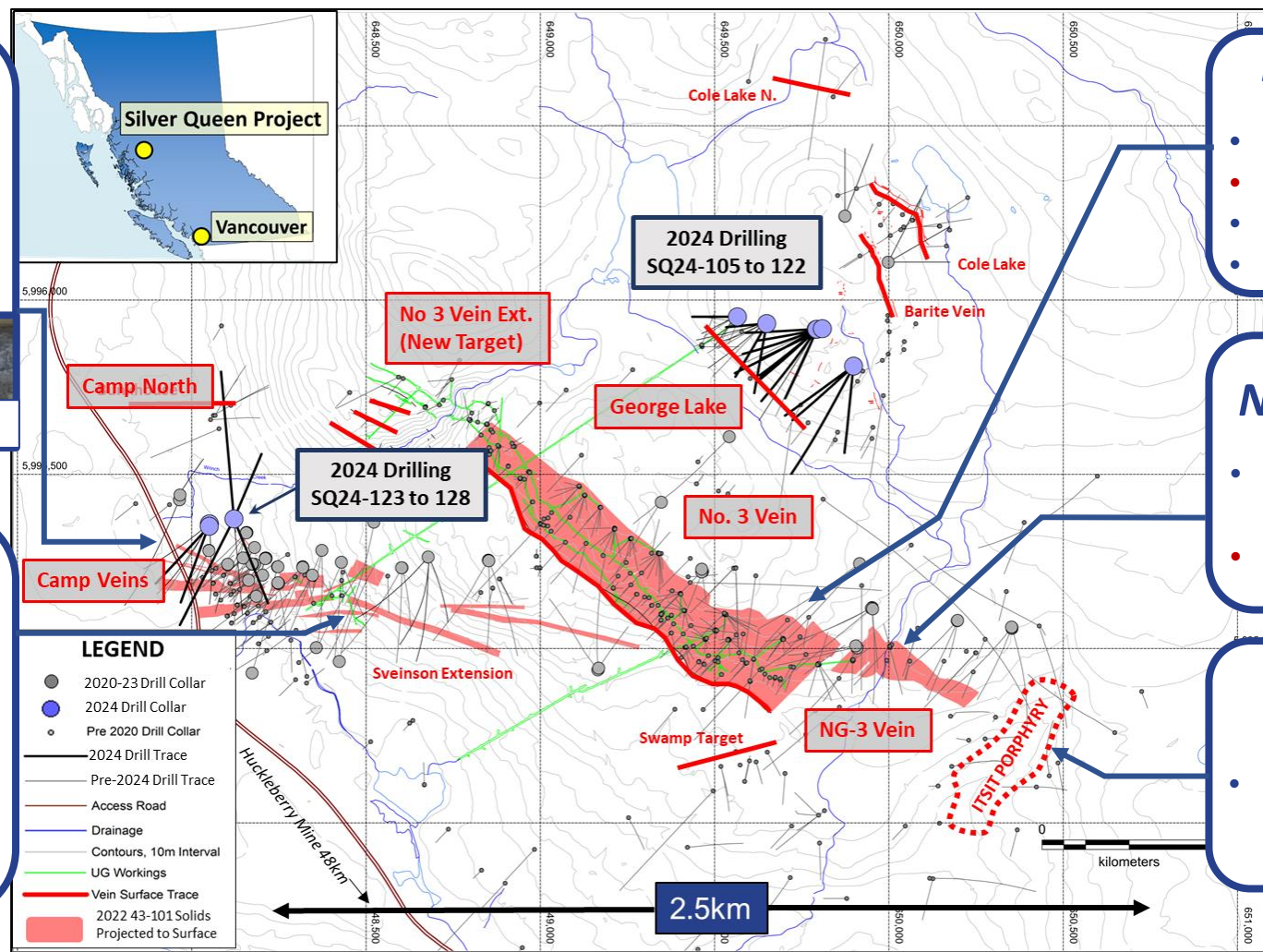
- High-grade gold intercepts,
- **Updated Mineral Resources**
- 92% in Indicated category
- Existing U/G infrastructure

NG-3 Deposit – Gold bias

- Drilling confirmed down-dip high-grade gold
- **Updated Mineral Resources**

Itsit Cu-Mo Porphyry

- Buried Target; tested by 6 historical holes



Silver Queen Project

Mineral Resource - Open for Expansion

Silver Queen Mineral Resource Estimate (NI 43-101 Compliant, Dec. 1, 2022) (C\$100 NSR cut-off)

Indicated Resources Zone	Tonnes (kt)	Average Grade						Contained Metal							
		Ag (g/t)	Au (g/t)	Cu (%)	Pb (%)	Zn (%)	AgEq (g/t)	AuEq (g/t)	Ag TrOz (kcozs)	Au TrOz (kcozs)	Cu (Mlbs)	Pb (Mlbs)	Zn (Mlbs)	AgEq TrOz (kcozs)	AuEq TrOz (kcozs)
No. 3 and NG3 Veins	2,942	150	2.45	0.25	0.7	3.8	569	6.9	14,168	232	16	43	249	53,852	657
Camp / Sveinson Veins	514	412	0.31	0.19	0.4	1.5	541	6.5	6,808	5	2	5	17	8,940	108
Total	3,455	189	2.13	0.24	0.6	3.5	565	6.9	20,976	237	18	48	267	62,792	765
Inferred Resources															
No. 3 and NG3 Veins	257	110	1.94	0.32	0.2	1.1	361	4.4	911	16	2	1	6	2,975	36
Camp / Sveinson Veins	1,664	176	0.64	0.22	0.6	2.1	366	4.4	9,387	34	8	22	78	19,562	237
Total	1,920	167	0.82	0.23	0.5	2.0	365	4.4	10,298	50	10	23	84	22,536	273

- 1) The current Mineral Resource Estimate was prepared by Garth Kirkham, P.Geo., of Kirkham Geosystems Ltd and Eugene Puritch, P. Eng., FEC, CET and Fred Brown, P. Geo. of P&E Mining Consultants Inc. ("P&E"), Independent Qualified Persons ("QP"), as defined by National instrument 43-101.
- 2) All Mineral Resources have been estimated in accordance with Canadian Institute of Mining and Metallurgy and Petroleum ("CIM") definitions, as required under National Instrument 43-101 ("NI43-101").
- 3) Mineral Resources were constrained using continuous mining units demonstrating reasonable prospects of eventual economic extraction.
- 4) Silver and Gold Equivalents were calculated from the interpolated block values using relative process recoveries and prices between the component metals and silver to determine a final AgEq and AuEq values.
- 5) Silver and Gold Equivalents and NSR\$/t values were calculated using average long-term prices of \$20/oz silver, \$1,700/oz gold, \$3.50/lb copper, \$0.95/lb lead and \$1.45/lb zinc. All metal prices are stated in \$USD. The C\$100/tonne NSR cut-off grade value for the underground Mineral Resource was derived from mining costs of C\$70/t, with process costs of C\$20/t and G&A of C\$10/t. Process recoveries used were Au 70%, Ag 80%, Cu 80%, Pb 81% and Zn 90%.
- 6) Grade capping was performed on 1m composites for the No. 3 and NG-3 veins and whole vein composites for the Camp and Sveinson veins. For the No. 3 and NG-3 veins Inverse distance cubed (1/d³) was utilized for grade interpolation for Au and Ag and inverse distance squared (1/d²) was utilized for Cu, Pb and Zn. Inverse distance squared (1/d²) was used for all metals in the Camp and Sveinson veins.
- 7) A bulk density of 3.56t/m³ was used for all tonnage calculations in the No. 3 and NG-3 veins. A variable density with a 3.15 average was used for the Camp and Sveinson veins.
- 8) Mineral Resources are not Mineral Reserves until they have demonstrated economic viability. Mineral Resource Estimates do not account for a Mineral Resource's mineability, selectivity, mining loss, or dilution.
- 9) An Inferred Mineral Resource has a lower level of confidence than that applying to an Indicated Mineral Resource and must not be converted to a Mineral Reserve. It is reasonably expected that the majority of Inferred Mineral Resources could be upgraded to Indicated Mineral Resources with continued exploration.
- 10) All figures are rounded to reflect the relative accuracy of the estimate and therefore numbers may not appear to add precisely.

Silver Queen Project

Low Sulphide Veins

SQ21-034 48.55-48.85 m: 10,073 g/t Ag, 0.17% Cu, 0.08% Pb, 0.34% Zn



SQ21-049 131-131.3m: 3,235g/t Ag, 0.05% Cu, 0.64% Pb, 2.31% Zn



Silver Queen Project

High Sulphide Veins

SQ21-033 175.77-176 m: 2.1 g/t Au, 166g/t Ag, 0.04% Cu, 4.71% Pb, 9.26% Zn



SQ21-051: 414.15-414.5 m: 2.0g/t Au, 172g/t Ag, 0.1% Cu, 4.5% Pb, 6.6% Zn



Silver Queen Project

2024 Exploration

2024 Drilling has Extended Resource Potential in Three Different Target Areas

2024 Exploration

- Four areas targeted: 42 holes completed totaling 17,209 metres;
- Bonanza-grade mineralization Identified at both the George Lake and Camp Targets
- 821 soil samples extended known metal anomalies
- **No. 3 Vein extended 400m to the northwest**

Camp – Camp North

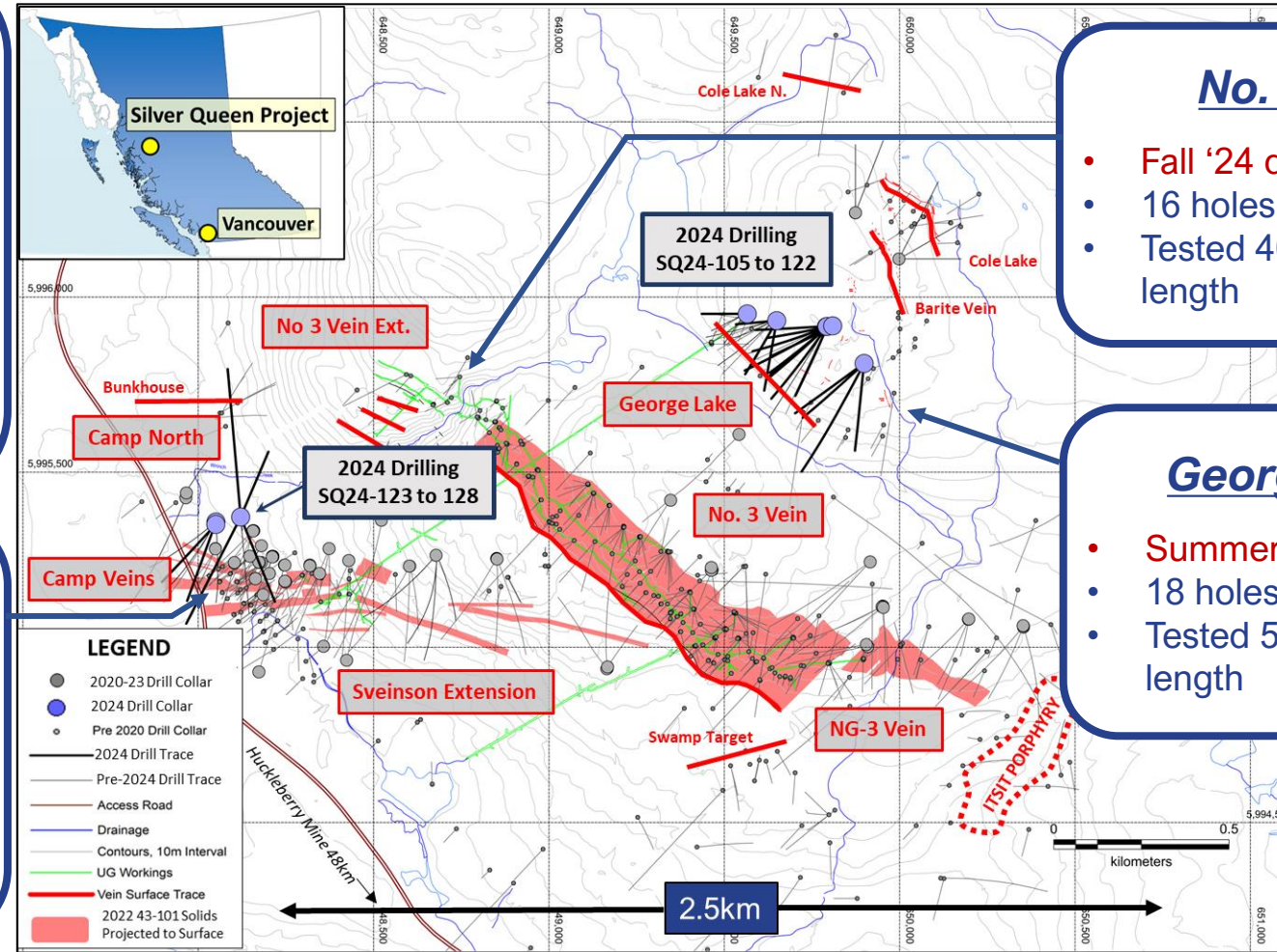
- **Summer '24 drilling**
- 8 holes – 3,704 metres
- New Discovery (Camp North)
- Extended Vein projections in Camp Deposit

No. 3 Vein North

- **Fall '24 drilling (completed)**
- 16 holes - 5,952 metres
- Tested 400 metres of strike-length

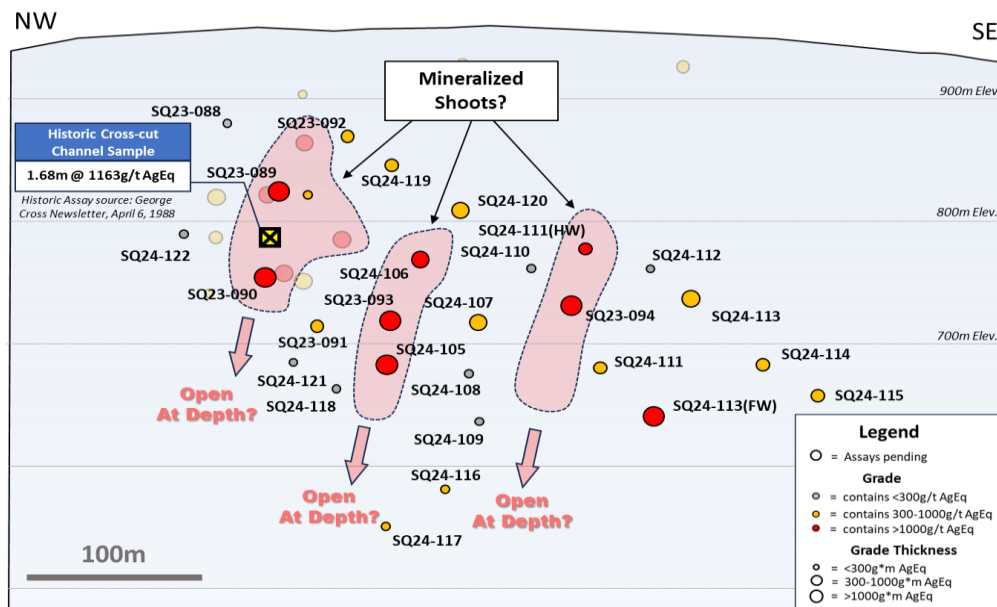
George Lake Target

- **Summer '24 drilling**
- 18 holes - 7,553 metres
- Tested 550 metres of strike-length



Silver Queen Project

George Lake and No. 3 North Targets



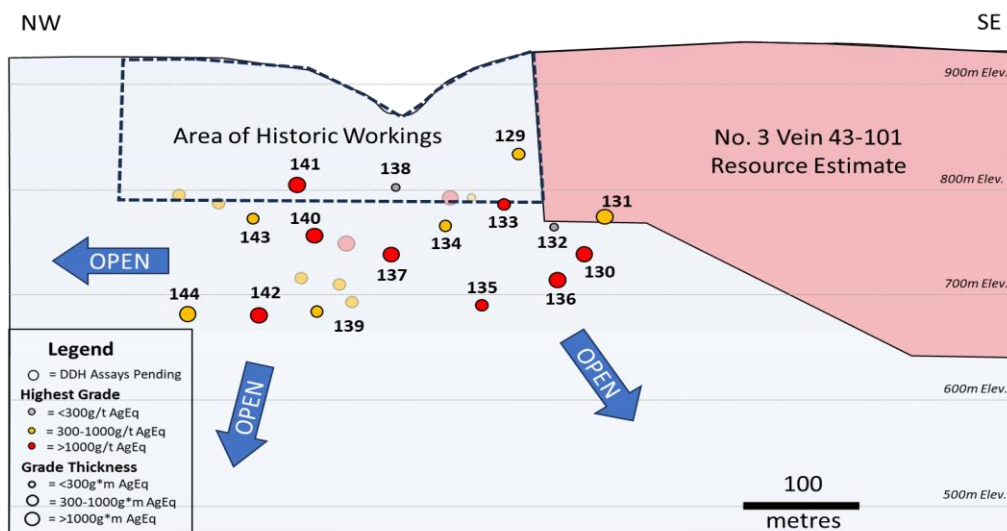
Drilling is designed to systematically extend mineral resources in areas immediately adjacent to existing U/G infrastructure

George Lake Target: 2024 Drill Assay Highlights

- SQ24-105: 8.8 metres averaging 324g/t AgEq; inc 1.2 metres grading 1,189g/t AgEq
- SQ24-105: 9.1 metres averaging 321g/t AgEq; inc 1.6 metres grading 802g/t AgEq
- SQ24-113: 0.4 metres grading 4,512g/t AgEq

New Targeting: No. 3 North Target

New 2024 drilling targeted a +400 metre northwest extension of the No. 3 Vein which remains open both laterally and to depth



- SQ24-136: 7.6 metres averaging 431g/t AgEq; inc 1.6 metres grading 1,475g/t AgEq;
- SQ24-130: 3.3 metres averaging 710g/t AgEq; inc 1.1 metres grading 1,341g/t AgEq
- SQ24-142: 0.7 metres grading 1,609g/t AgEq

Silver Equivalents were calculated using relative recoveries and prices between the component metals and silver to determine a final AgEq value. Silver Equivalent values were calculated using average long-term prices of \$20/oz silver, \$1,700/oz gold, \$3.50/lb copper, \$0.95/lb lead and \$1.45/lb zinc. All metal prices are stated in \$USD. Process recoveries used were Au 70%, Ag 80%, Cu 80%, Pb 81% and Zn 90%.

Arlington Property

Property Summary

District-scale property in southern British Columbia

- ***Nine tenure claims covering 3,584ha in the Greenwood Mining District within the Okanagan sub-terrane of the prolific Quesnel Terrane***
- ***Year-round access by Highway 33 from the south via the community of Rock Creek and from the north via Kelowna***
- ***Moderate rolling terrane with extensive Logging Roads allows access into and throughout the Property***

Potential analogue to known productive historic mines:

- ***Buckhorn Mine (+1Moz high grade historic Au production) from Au-Cu magnetite skarn***
- ***Phoenix Mine (1Moz Au, 6Moz Ag and 500Mlb Cu production) from Au-Cu magnetite skarn***
- ***Beaverdell Mining (35Mozs Ag production from) high-grade polymetallic veins***



Arlington Project

Background and History

Small-scale mining activity starting 130 years ago

- ***Historic placer claims from mining starting in late 1880s with the source of gold not found***
- ***Multiple new discoveries in an area with only sporadic exploration since late 1880s***
- ***High-grade Rock Sampling results – up to 11.67g/t Au, 3.22% Cu and >1% Mo***
- ***Four Deposit Target Types Identified:***
 1. *High-grade Au-enriched poly-metallic quartz veins Arlington area;*
 2. *Cu magnetite skarn Arlington and Rona areas;*
 3. *Intrusion related Au-As veins identified in the Fresh Pots target area; and*
 4. *Cu-Ag-Mo porphyry system in the Rona area*



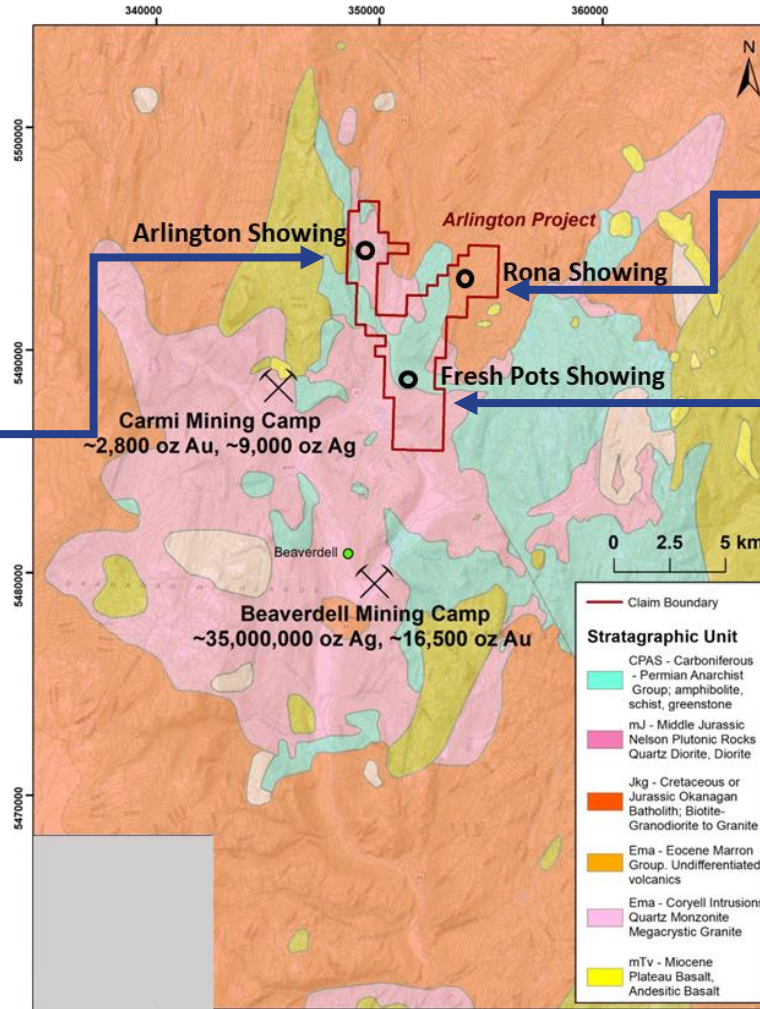
Historic Adit Targeting Cu-Au Skarn on the Property

Arlington Project

Geology and Target Types

Arlington Showings

- Polymetallic veins and Replacements
- Significant historical workings reflect a long exploration history dating back to the late 1880's
- 13 Mineral occurrences include:
 - Polymetallic Quartz Veins
 - Disseminations/Replacement on shear/vein margins
 - Magnetite Cu Skarn



Rona Cu-Mo-Ag Target

- Large Cu-Ni soil anomaly
- Mineralized mafic/ultramafic intrusion
- Anomalous Cu-Mo-Ag Soils
- Skarn potential in adjacent sedimentary rocks

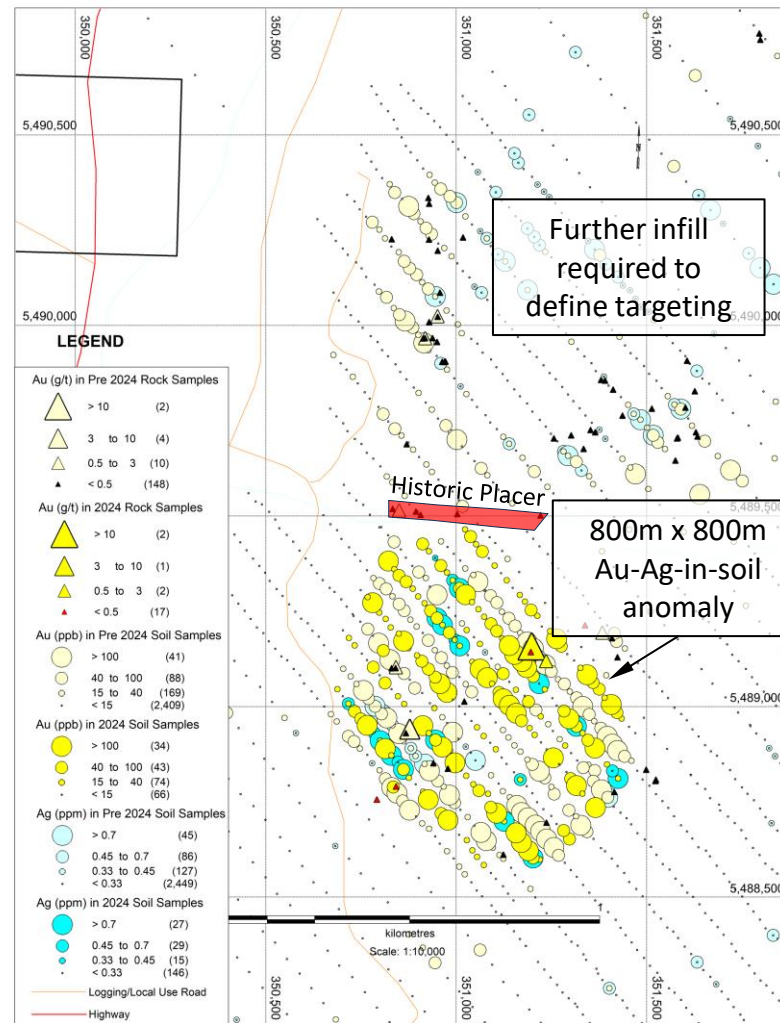
Fresh Pots Au-Ag Target

- Drill ready Intrusion-related gold target
- Large 2km x 1km Au-in-soil anomaly associated with Ag-As-Sb-Bi-W
- Historic Au-Placer Deposits
- New soil and rock sampling to further refine targeting
- Drilling started May 2025

Arlington Project

Fresh Pots Au-Ag Target

- 800m x 800km Au-Ag Soil Anomaly in Fresh Pots south is initial drilling target for 2025
- Further surface sampling required on Fresh Pots north
- Potential Intrusion related gold system with Au-As-Py-Qtz veins in broad fracture zones
- Potential source for historic Au-placer deposits
- Packsack drilling assayed 0.7m of 2.18g/t Au, 11.34g/t Ag, and 0.35% Cu (only core recovered)

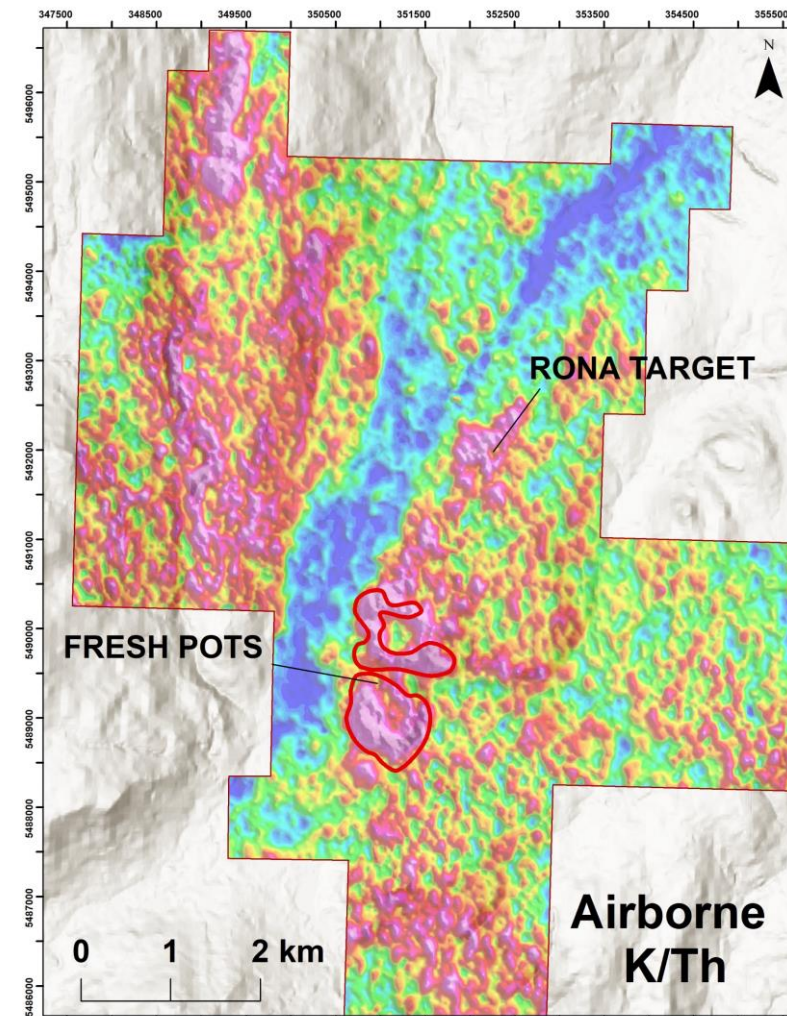
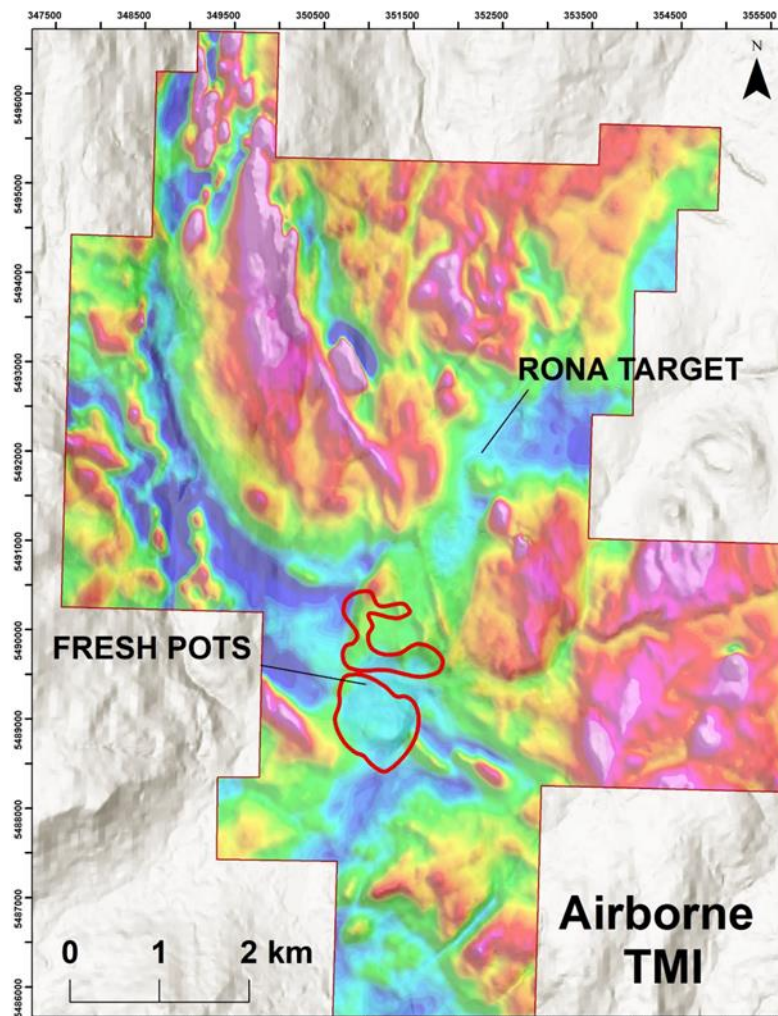


Packsack drilling into Fresh Pots Showing

Fresh Pots Gold in Soils 2022 and 2024

TSXV:EQTY / OTCQB:EQMEF/ FSE-EGSD

- Property-wide Airborne Magnetic Survey flown in January, 2025
- The Fresh Pots soil anomaly is characterized by a prominent magnetic low and
- An elevated K/Th radiometric signature identified in an airborne magnetic/radiometric survey flown over the entire 5,387ha Arlington property in January 2025



Arlington Project

Rona Cu-Mo Porphyry Target

- *Greenfields discovery with several undocumented workings*
- *Pyroxenite intrusive associated with a strong Cu-Ni anomaly*
- *Argillic alteration mapped extensively in metasedimentary rocks. The source of alteration is unknown*
- *Samples assay up to >1% Mo, 0.61% Cu, 0.6g/t Au and 32.4g/t Ag*
- *Further surface work planned for 2025 to upgrade targeting*

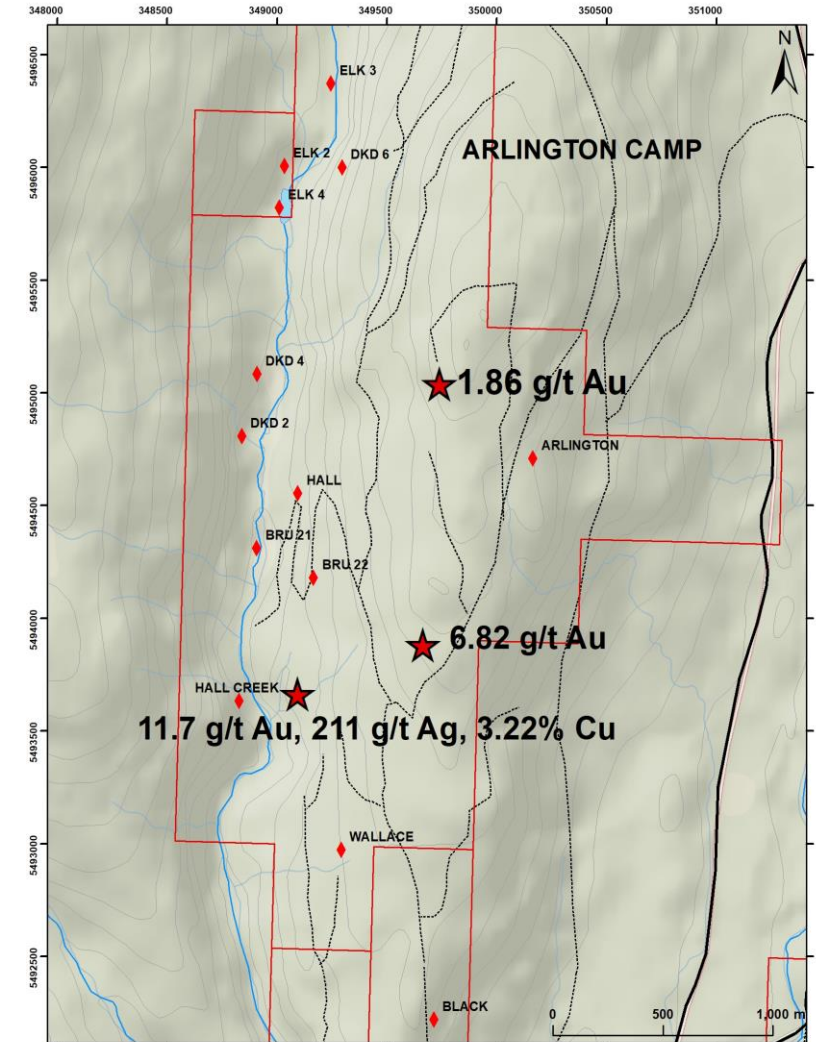


Example of Rock from Vein in Rona Area

Arlington Property

Arlington Epithermal Au Target

- Staked by technical team in 2015, work performed in 2015, 2017, 2018 comprising soil surveys, ground magnetic/VLF surveys and prospecting
- All 13 Historical known showings revisited; mineralization confirmed. Highlights:
 - Arlington – 2.56 % Cu, 131 g/t Ag
 - Bru 22 – 10.89 g/t Au
- New Showings Discovered in 2022 - Quartz Veins and Breccias in old undocumented workings.
 - Arlington North – 1.86 g/t Au, 22 g/t Ag, 1.07% Cu
 - Arlington South – 11.67 g/t Au, 211 g/t Ag, 3.22% Cu
- +5km Strike Length now delineated by sampling
- Further work required to determine best drill targets within the +5km of strike length



2022 Sampling Highlights on Arlington Trend

Equity Metals

2025 Exploration Plans

Silver Queen Property

'24 Q4: **Drilling Completed**

'25 Q1: Compile Assays and interpretation – **In Progress**

'25 Q2 - Q4: Modelling of drill data at George Lk , No. 3 North targets and Camp - Sveinson deposits; Additional drilling at No. 3 North, Camp and other targets with an Initial 6000 metres planned for June/July 2025

Initial Budget: C\$1.6M

Arlington Property

'24 Q4: Infill soil and rock sampling on the Fresh Pots grid – **Completed**

'25 Q1- Q2: Property-wide Airborne Magnetic/Radiometric Survey; LiDar Survey; ground IP – **In Progress**

'25 Q2 – Q3: Surface mapping; soil and till sampling; **3,000 Drill Program started on the Fresh Pots gold anomaly**

Initial Budget: C\$1.2M

Why Invest In Equity Metals?

*Providing Investment Opportunities by Unlocking the Demand for Critical Metals
Through Exploration in British Columbia, Canada*



Balanced Portfolio
Exposure to Precious, Base and EV
Metals; Diamonds

equitymetalscorporation.com

2024 Fall Silver Queen Drilling
+17,000m Drilling Complete, Extends
Known Mineralized zones
Exceptional Ag-Au Assay; Further
Exploration Upside

TSXV:EQTY / OTCQB:EQMEF/ FSE-EGSD

New Arlington Acquisition
New Au-Ag Targets Identified
Fully Funded Drill Programs for
2025

Equity Metals Corporation

Questions?

Contact

**1100 - 1199 West Hastings Street
Vancouver, BC Canada
V6E 3T5**

**Phone: (604) 641-2759
Email: corpdev@mnxltd.com**

**TSXV:EQTY / OTCQB: EQMEF
equitymetalscorporation.com**